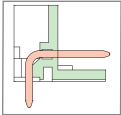


# MD222 Connector, Plug



MD

### DIMENSIONS/POSITIONS

### MD222-350

間距	Pitch	3.50mm
位數	Poles	2 ~ 24Poles
塑膠本體	Housing Material	PA 66
焊針	Pin Dimensions	Brass, Tin Plated
PCB孔徑	PCB Hole Diameter	1.2mm
環境作業溫度	Operating Temperature	-40°C to +105°C

### TECHNICAL DATA

連接符合標準 Connection in acc. with standard EN-VDE		
額定電流 I <sub>n</sub> Nominal Current I <sub>n</sub>		8A
額定橫截面 Nominal Cross Section		0.75mm <sup>2</sup>
最大負載電流 Maximum load current		8A
絕緣材料 Insulating Material		PA
阻燃等級,符合UL94 Inflammability class acc. to UL94		V0
額定電壓,UL/CUL Nominal voltage, UL/CUL		300V
額定電流,UL/CUL Nominal current, UL/CUL		8A

